

DENTURE DOPPLEGANGERS – A CASE REPORT

*Pratheeksha V. Nair, ** Sudeep S., ***Dinesh N., ****Sapna Bhaskaran, *****Sreeja C. Babu

*Post graduate Student, **Professor and HOD, *** Professor, Department of Prosthodontics, PMS Dental College, Vattappara, Trivandrum, Kerala | Corresponding author: Dr Pratheeksha V. Nair, E mail: pratheekshav@gmail.com

Abstract:

Many patients demands for a new denture which is exactly same as that of the old dentures. In such cases, the new dentures can be made by duplicating the old dentures. A simplified technique of fabrication of duplicate denture is described in this article. The tissue surface were simulated with light body impression material and the teeth and polished surface of the denture were simulated with putty impression material.

Key words: Complete denture, Denture duplication, Wax replica

INTRODUCTION

Denture duplication is most appropriate when a patient is satisfied with the old denture but needs a new denture.¹ These replica dentures may have many faults when evaluated by a dentist but the patient demands for a new denture which is identical to the old denture. If the arch form, jaw relations, and stability of the old denture is acceptable, then the denture duplication can be advised.¹ Denture duplication should not be used to correct large deficiencies in arch form or vertical dimension greater than about 3 mm.¹ Reproducing the teeth and contour of the polished surfaces of the old dentures in a new set of dentures aid in the rapid adaptation of the denture in patients

especially with neuromuscular disorders. A variety of methods have been suggested for duplicating an existing complete dentures.¹⁻⁹ In this article, we describe a simple technique of duplication of an existing complete denture.

CASE REPORT

A 67-year-old male with a complaint of ill fitting (loose) upper denture and lower denture with dislodged canine teeth was referred to the Department of Prosthodontics for prosthetic rehabilitation. The dental history revealed that the patient had been edentulous for approximately 5 year and was a denture wearer from past 5 years. On oral examination, well-formed edentulous upper and lower ridges were found. On evaluation, the maxillary denture was lacking adequate retention and missing canines in the lower denture. The patient demanded to get a new denture which is identical to that of his old denture with enhanced retention and stability.

PROCEDURE

In the first day of clinical visit, a functional impression was made using the old denture as the impression tray with light body impression material. Putty index was made for duplication the polished surface of the old denture. For the putty index two slightly large perforated stock trays were selected and putty impression material was placed

in the tray. (Fig 1) The functional impressions were then immersed in the stock tray. When the putty material had set, locating grooves were placed

on the putty index. (Fig 2) Cast were poured with type III dental stone after beading and boxing of the tray. (Fig 3) The set cast and the denture were



Fig 1 Selection of perforated stock tray

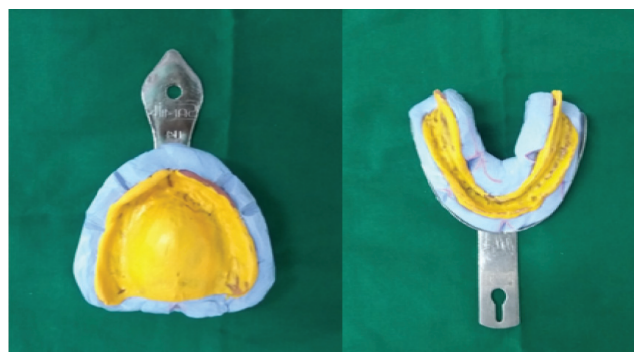


Fig 2 Putty index



Fig 3 Beading and boxing



Fig 4 Poured master cast



Fig 5 Wax replica of the old denture

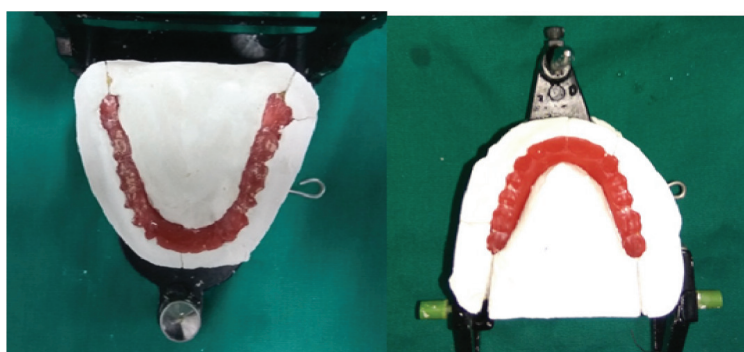


Fig 6 Plaster index

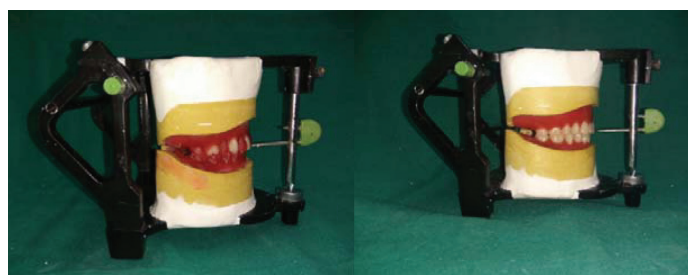


Fig 7 Teeth setting



Fig 8 Old denture and new denture

PROSTHETIC AND IMPLANT DENTISTRY

Official Publication of Indian Prosthodontic Society
Kerala State Branch

retrieved from the putty index. (Fig 4)

Denture base was made using self-cure acrylic resin on the master cast. Wax replicas of the old denture were made by pouring wax on the space created by the old denture. The locating grooves were used to orient the master cast to the putty index. (Fig 5)

In the next appointment, jaw relation was recorded using the wax replica. It was then articulated and plaster index was made to aid in teeth setting. (Fig 6) Every other tooth is replaced initially, to help maintain arch form and tooth position. (Fig 7)

In the next appointment, trial insertion was done. The patient was thoroughly satisfied with the trial insertion. The denture was fabricated using the conventional method and the new denture was delivered to the patient in the next appointment. (Fig 8)

CONCLUSION

An easy and cost effective technique for duplication of the denture has been described. No special equipment are required. Aesthetics and function of the complete denture was achieved. The familiar

features of the old dentures are retained in the new dentures. This method is particularly suited for elderly patients.

REFERENCES

- 1) C. Peter Owen New Dentures from Old: A Duplication Method Using "Appropriatech" JCDA June 2006, Vol. 72, No. 5.
- 2) Sendhilnathan and Nayar: Fabrication of duplicate denture The Journal of Indian Prosthodontic Society October 2007 Vol 7 Issue 4.
- 3) Mohamed and Faraj: Duplication of complete dentures using a sectional mold technique J Prosthet Dent 2001;85:12-4.
- 4) Nassif and Jumbelic Duplicating maxillary complete dentures J Prosthet Dent November 1984, Volume 52 Number 5.
- 5) Sandra L. McCarthy, J Prosthodont 1995;4:54-57.
- 6) Dukes, Barnett, Kniejski: A method for the duplication of complete dentures: JADA, Vol. 101, September 1980.
- 7) AnandSekhar, Saldanha Sharon J.R, Thilak B Shetty, SujathaDeshmukh: Duplication of Dentures: How well Dentures can be copied using different techniques International Dental Journal Of Student's Research January 2015 Volume 2 Issue 4.
- 8) IzharulHaque Ansari: Duplicating an existing complete denture to make a replica J Prosthet Dent 1994; 72: 445 – 447.
- 9) Assery CM, Fakiha Z. A technique for duplicating complete dentures. Dent News J 1997;4:9-12.